



# PAVE-IR

## REAL-TIME THERMAL PROFILING

The innovative system for process optimisation and documentation in road construction.



# CHALLENGES IN THERMAL SEGREGATION

The optimal temperature of the paving material is a decisive factor in road construction, with a significant influence on the quality of the road. A comprehensive thermal visualisation of the paving process offers important insights regarding the quality of the material and introduces completely new optimisation potentials.



## MATERIAL QUALITY

The material quality is a decisive factor in asphalt paving and for the temperature behavior.



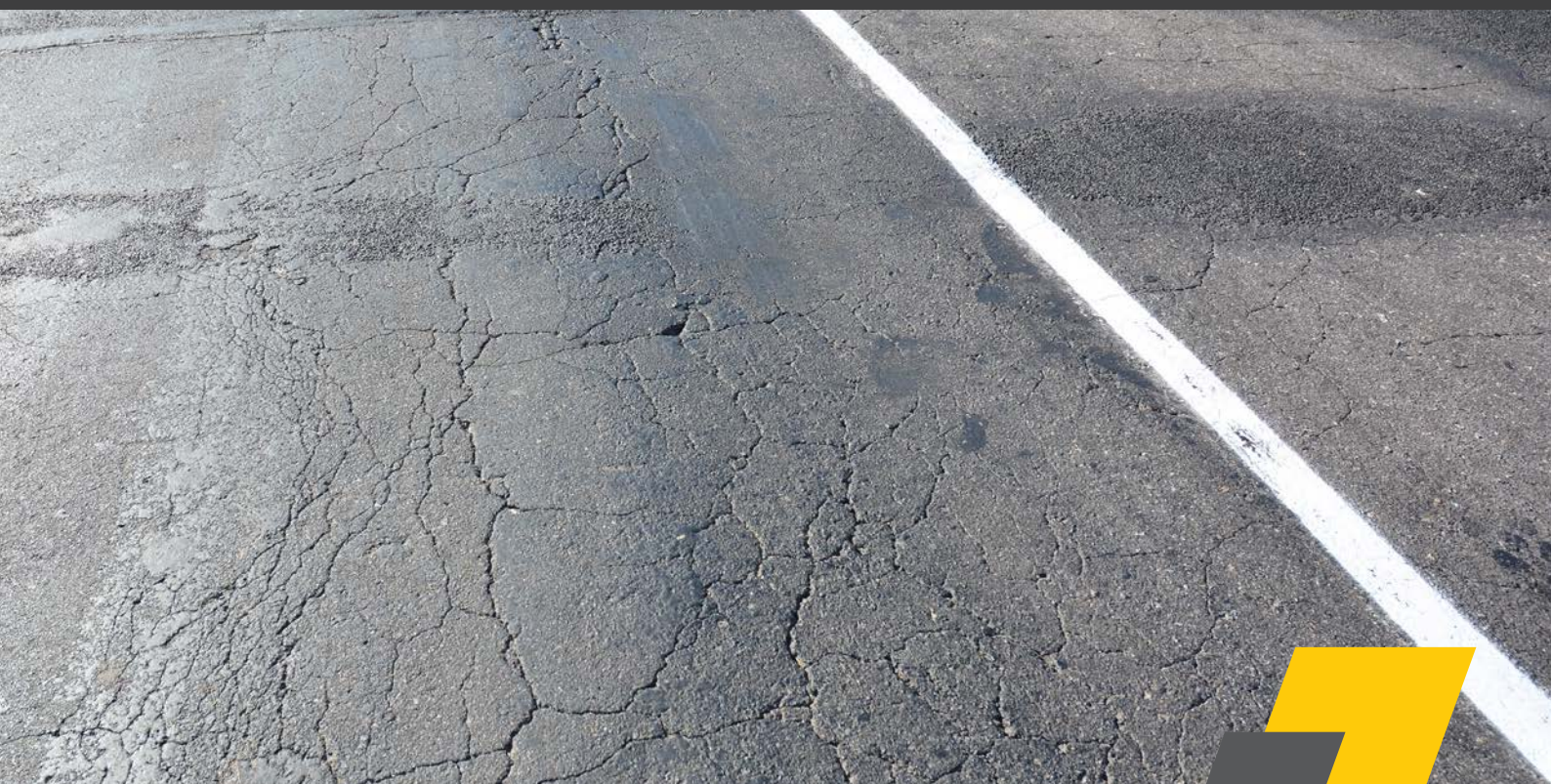
## MATERIAL TRANSPORT

The material has to get through several stations before paving. All of them influence the temperature.



## PAVING TEMPERATURE

During asphalt paving you can't measure the temperature without instruments. Paving/Compacting at wrong asphalt temperatures leads to bad results.





# REAL-TIME THERMAL PROFILING PAVE-IR

PAVE-IR is the first system, which simply and clearly creates a thermal profile of the road – and that in real-time! The high-precision temperature scanner creates a comprehensive thermal profile of the paved layer across a width of 13m, which optionally serves as proof of the laying and delivery temperatures. The fully automatic visualisation of the temperature thereby enables the quick detection of individual spots of thermal segregation and allows immediate action to be taken!



## **Process improvement**

With the system you get the possibility to improve the quality of the process.



## **Increased productivity**

Because of the monitored work, you will do the work faster and more accurate, which increases productivity.



## **Modularity & flexibility**

Thanks to the modular structure, the system is flexibly upgradable/combinable, also for future products.



## **Process reliability**

Documentation of the process gives safety about the conducted steps in the process.

# THE FEATURES OF THE PAVE-IR SYSTEM

The unique technology of the scanner offers the distinct advantage of determining the temperature of the asphalt surface and the material very accurately. Based on its modular concept, PAVE-IR is compatible with every paver – completely independent of the manufacturer and the age of the machine.

- **High-precision measurement** of the material temperature for detecting thermal segregation
- **Material temperature readings** to detect thermal segregation
- **Captures very large installation widths up to 13m**
- **Live visual data analysis** of asphalt mat thermal profile
- **Visualization of thermal material properties** for detection of thermal segregation
- **Cloud connectivity:** further analyse data in the MOBA cloud or 3rd party solutions like VEDA
- **Perfect adaptability** with equipment of all paver types and models
- **Open interface:** Analyse data locally in the Pave Project Manager



IR-TEMPERATURE  
SCANNER



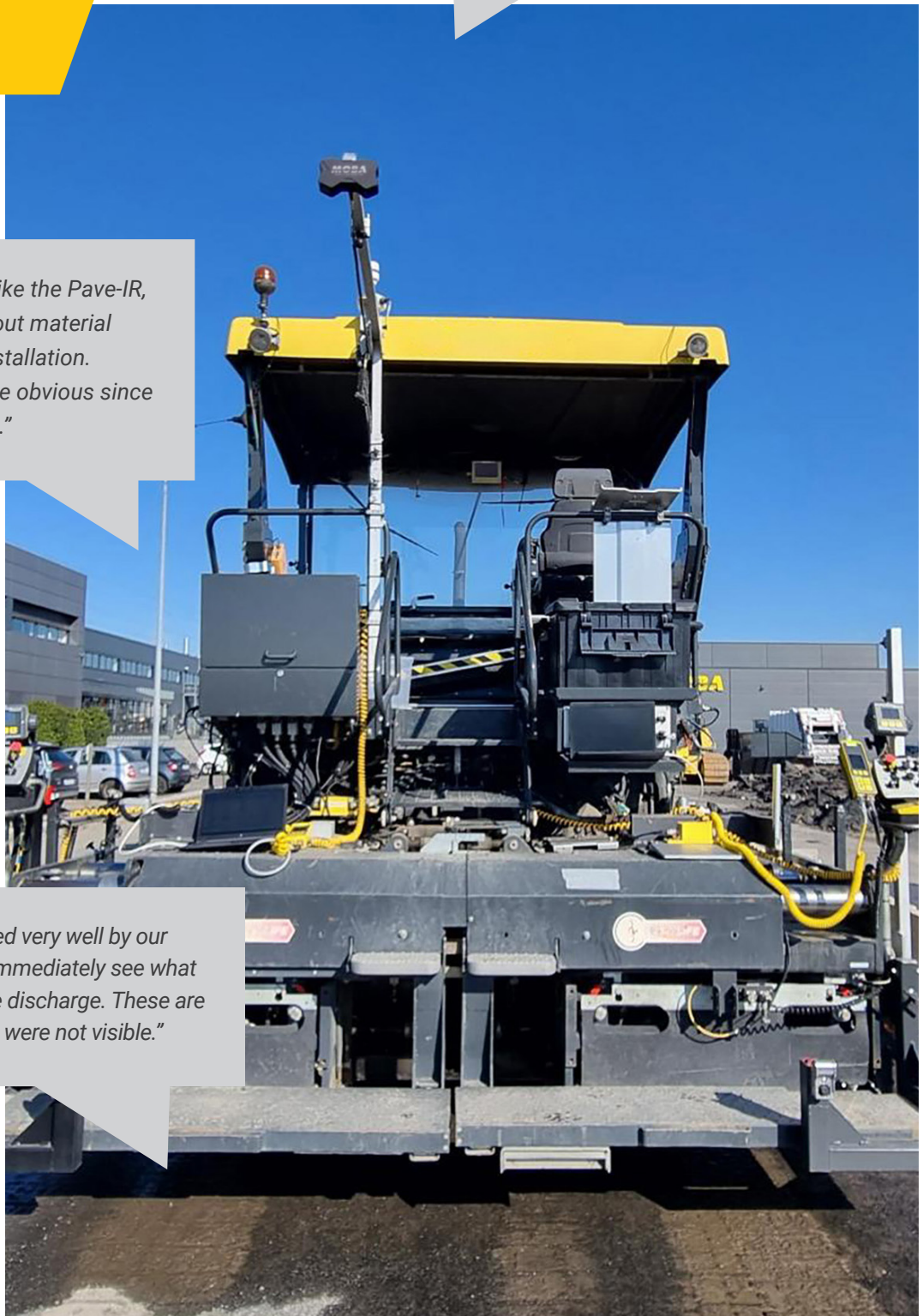
ONBOARD COMPUTER



*„Tools like the PAVE-IR produce high quality, long service life road surfaces, for the advantage of the entire road traffic, and thereby for all who participate.“*

*„Before we had tools like the Pave-IR, we knew very little about material temperature during installation. These aspects become obvious since we can visualise them.“*

*„The system is accepted very well by our employees. They can immediately see what is in the feed and in the discharge. These are areas which previously were not visible.“*



# OUR WEB PLATFORM

# MOBA CLOUD

The MOBA Cloud offers future-proofness and increases connectivity. In the long term it paves the way for a uniform database, which contributes towards a better understanding and analysis of process data. The combination of data from different systems offers decisive added value. In this way, the linking of the MOBA paving products forms a basis for optimising measures and improves the quality of road construction in the long term.



## ADVANTAGES

### CONNECTIVITY

Interfaces to third party solutions like logistics and planning tools increase added value. This connectivity is an important step towards road construction of the future.

### EFFICIENCY

Automatic data transfer makes sure running projects can be retrieved, analyzed and archived from the office in real-time.

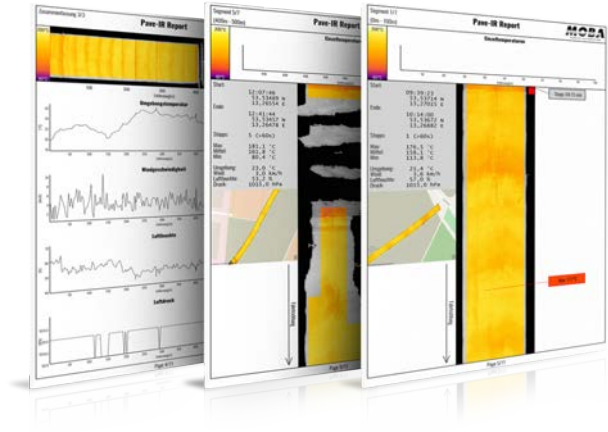
### CONTROL

A user control system allowing the distribution of user authorisations serves as an additional security measure and guarantees that only selected persons will have access to the data.

# PAVE PROJECT MANAGER

Pave-IR data can also be analysed through the locally installed Pave Project Manager

- Individual temperatures
- Time diagram, e.g. for paver stops
- Quality factor diagram
- Speed diagram
- Weather diagram
- Map view
- Report generation
- Selection of areas to ignore

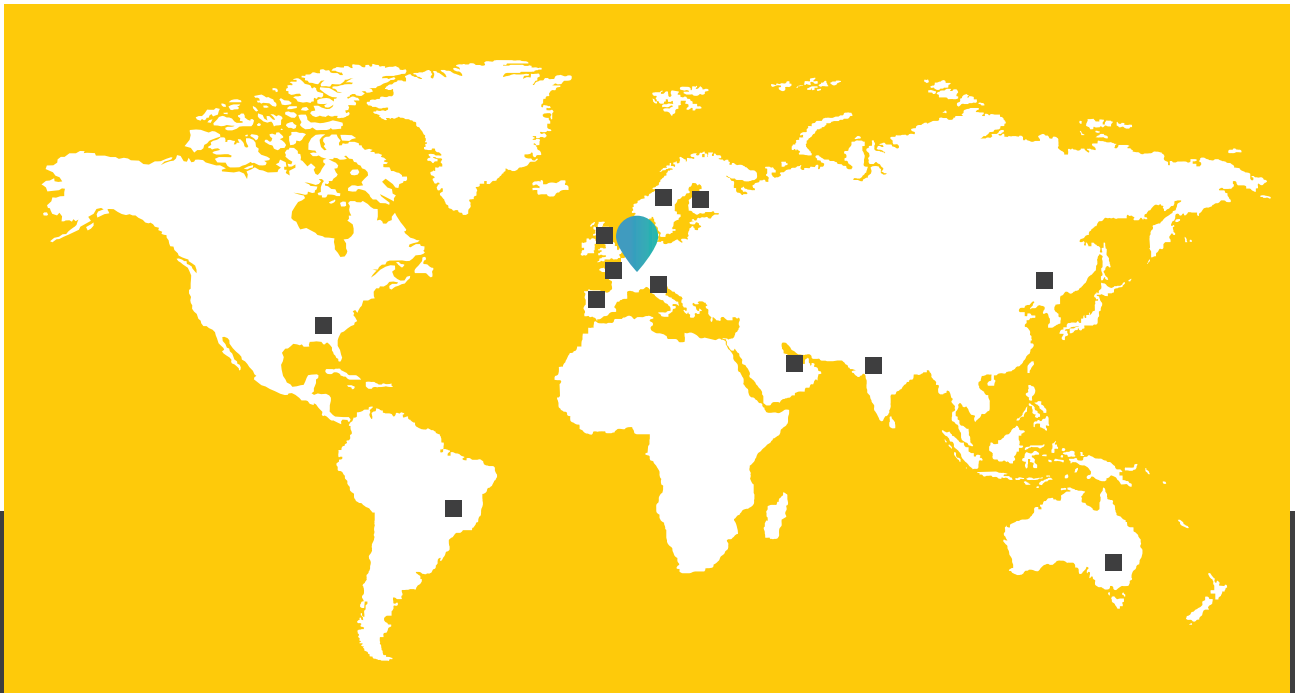


**Detect thermal segregation.  
Ensure superior quality roads.**

# MOBA GROUP

The MOBA Group has been an established name in mobile automation for more than 50 years. Our know-how and many years of experience in automation technology distinguish us as globally recognized experts. We develop and produce innovative machine control systems, identification and mobile weighing technologies as well as flexible software solutions. But MOBA components and systems are also used in other areas where robust and reliable sensors, controllers and operating units are required.

**First Choice In Mobile Automation** - that's what MOBA has stood for for more than 50 years!



## CONTACT



**MOBA Mobile Automation AG**  
Kapellenstraße 15  
65555 Limburg | Germany  
[moba-automation.de](http://moba-automation.de)