



CAN-LIGHT

SMART SIGNALING FOR MOBILE MACHINES

The CAN-LIGHT is a compact, intelligent RGB signal light with integrated buzzer, designed for clear and customizable visual communication on mobile machines.



SMART SIGNALLING FOR MOBILE MACHINES

CAN-LIGHT

Modern mobile machines need more than standardized color codes: they require context-sensitive, flexible feedback—ideally in a space-saving format. This is exactly where CAN-Light comes in: it creates intelligent communication through individual color, text, and symbol displays, acoustic warning signals, and foolproof configuration – without any programming. Whether on construction sites, in agriculture, or in heavy-duty machinery: CAN-Light provides reliable signaling, even under the most difficult conditions.



CUSTOMIZABLE TO INDIVIDUAL REQUIREMENTS

CAN-LIGHT offers flexible colour, flash, and brightness settings for any status or application – adjustable anytime without hardware changes.



FUTURE- PROOF AND COST- EFFICIENT

Custom applications can be easily installed – one hardware unit supports many different uses, reducing spare part costs.



CLEAR SIGNALING FOR INCREASED SAFETY

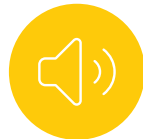
Provides clear, situation-specific signals – enabling faster reactions and improved safety.

COMPACT OUTSIDE. POWERFUL INSIDE.

Equipped with high-end electronics and robust mechanics, CAN-LIGHT combines visual brilliance with acoustic alerts and intuitive connectivity.



RGBw LED matrix
with nearly 100 individually
addressable LEDs



Acoustic buzzer
up to 95 dB for audible
alerts



Rugged housing
IP67, shock and vibration
resistant



Fully programmable
icons, colors, texts,
and logos



Plug & play setup
no coding required



Flexible mounting
screws, magnets,
RAM-mount, clamps



TWO DESIGNS. ONE SMART SOLUTION.

Whether space-saving or highly visible: CAN-LIGHT is available in two designs – both easy to rotate and simple to mount.

FLAT DESIGN



- Slim, unobtrusive form
- Ideal for surfaces with limited height
- Rotatable in 90° steps

CIRCULAR DESIGN



- Nearly 360° visibility
- Highly effective in dynamic work zones
- Also rotatable in 90° steps

SPECIFICATIONS

- Voltage: 8–32 V
- Protection: IP67
- Communication: CANopen
- Audio: Buzzer up to 95 dB
- LEDs: ~100 RGB

MOUNTING OPTIONS



Magnet or screws

ONE LAMP. MANY APPLICATIONS.



From construction sites to autonomous systems:
CAN-LIGHT communicates clearly and reliably, wherever it's used.



CONSTRUCTION & EARTHMOVING

Fill-level indication, machine status, warnings



LIFTERS

Visual readiness signals in loud environments



CRANE

Optical and acoustic information for the LMI status



WASTE MANAGEMENT VEHICLES

Status feedback, route progress, compaction signal

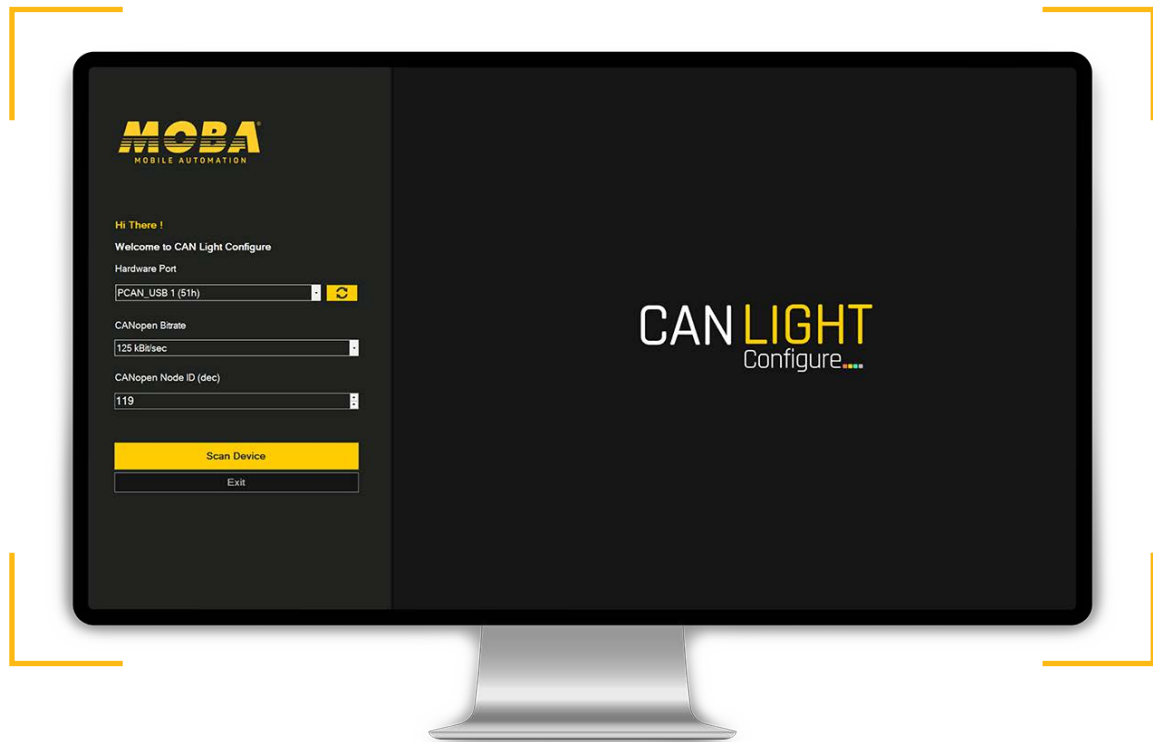


AUTONOMOUS MACHINES

Machine intent communication for surrounding workers

OUR WEB PLATFORM

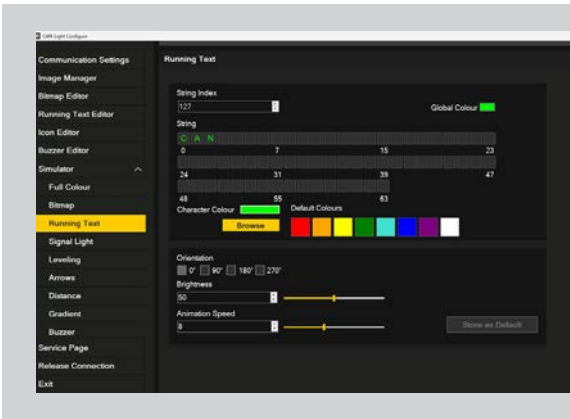
CAN-LIGHT CONFIGURE



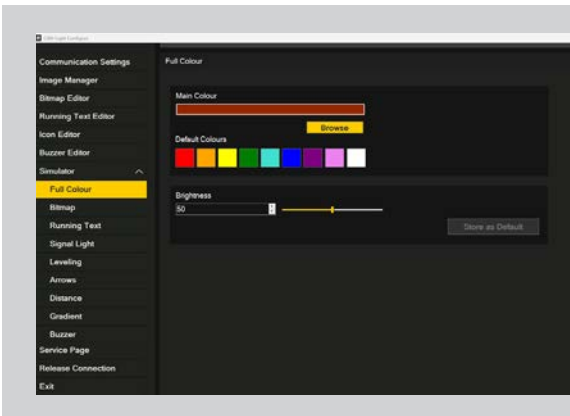
With the CAN-LIGHT Configure tool, you can assign colors, icons, and functions in just a few clicks.

- User-friendly configuration via PC
- Symbols and texts can be saved
- Assign functions, colors, text, icons, logos
- Save and deploy profiles via CAN bus
- Series integration

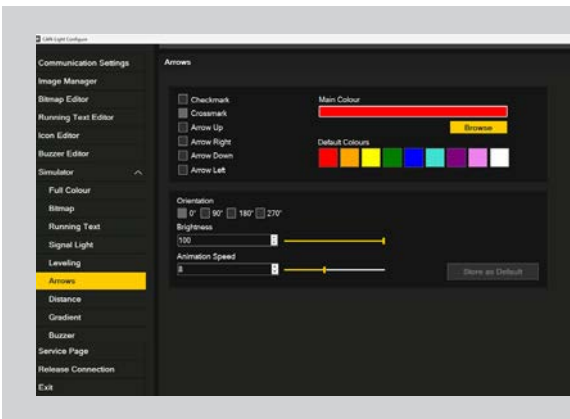
One Light. Endless Possibilities.



Picture 1: Example - Running Text Setting



Picture 2: Example - Full Colour Setting



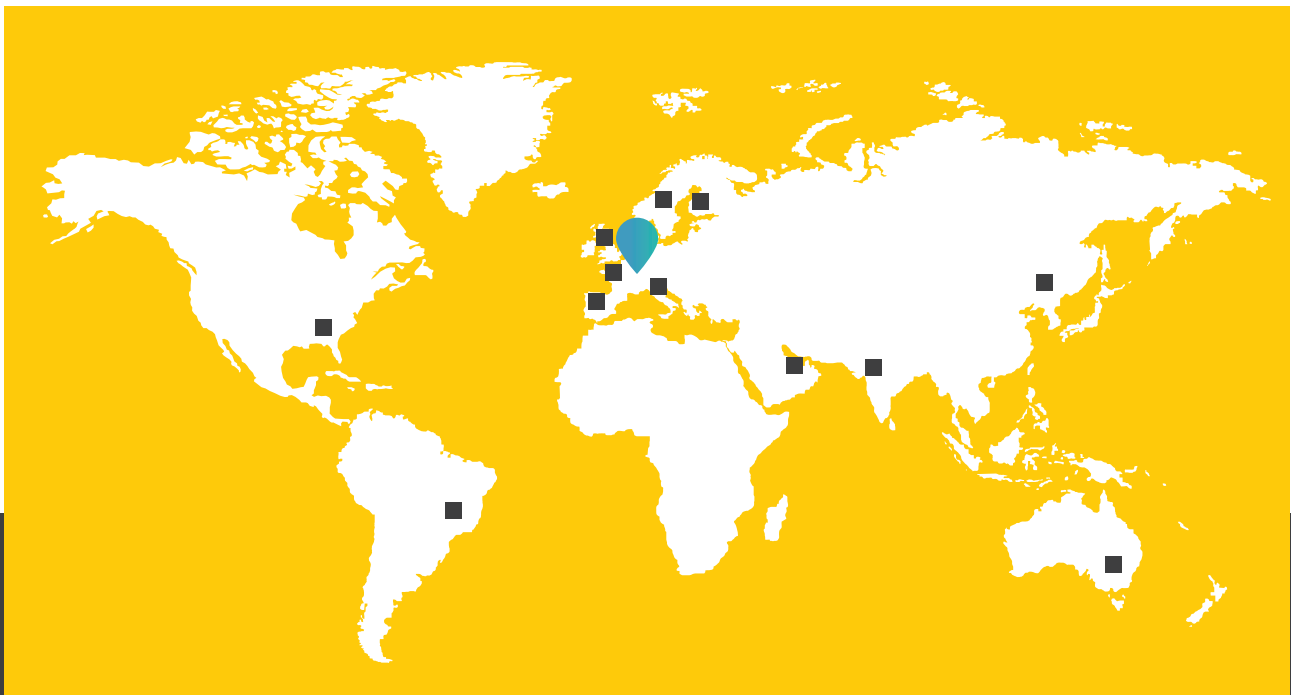
Picture 3: Example - Arrows Settings



MOBA GROUP

The MOBA Group has been an established name in mobile automation for more than 50 years. Our know-how and many years of experience in automation technology distinguish us as globally recognized experts. We develop and produce innovative machine control systems, identification and mobile weighing technologies as well as flexible software solutions. But MOBA components and systems are also used in other areas where robust and reliable sensors, controllers and operating units are required.

First Choice In Mobile Automation - that's what MOBA has stood for for more than 50 years!



CONTACT



MOBA Mobile Automation AG
Kapellenstraße 15
65555 Limburg | Germany
moba-automation.de